



Please read the manual thoroughly in order to secure your safety and to use the product properly.



- Smart & Premium Design
- Fire-proof
- Electric Shock & Static Proof
- Passcode Hide

MEMO

Introduction

- Safety Information 04
- Parts 04
- Components name 05

Basic Functions

- How to register passcode 05
- How to register RF Tag 06
- How to delete RF Tag 06
- How to open door from inside 06
- How to open door from outside 07

Additional Functions

- Outside force-lock function by passcode 07
- Etiquette mode function 07
- Inside force-lock/release function 08
- Passcode hide function 08
- High temperature alert function 08
- Intrusion alert function 08
- Prank Prevention function 08
- Deadbolt jamming alert function 08
- Auto/Manual lock setting 09
- Volume control function 09
- Low battery alert function 09
- Door open alert function 09
- How to change batteries 10
- Opening door with emergency battery 10
- Register & Delete function of master passcode/RF Tag 10
- Inactivation function of usual user's passcode and RF Tag 11

Checklist before calling for service 12

Specifications 12

Features

- Open/Close function**
- Door open by entering passcode
 - Door open by RF Tag
 - OPEN/CLOSE Button
- Outside force-lock function**
- Outside force-lock by passcode
- Auto close/Manual close setting function**
- Setting auto close/manual close by switch
- Inside force-lock function**
- Inside force-lock by program
- Others**
- Etiquette mode, high temperature alert, intrusion alert, passcode hide, Deadbolt jamming alert, auto re-lock, prank prevention, low battery alert, master management

Safety Information

This section contains user safety information. Please read carefully and use it properly.

- Warning:** If not followed, user can be dead or seriously injured.
- Caution:** If not followed, user can be injured or property damage can be caused.

Do not remove

- You should not remove any installed parts from the door. If you need to do so for any reason, please contact service center and consult.
- It can cause product malfunction or operation malfunction.

Do not spray water to the door lock or install it where it is exposed to water or damp.

- door lock is not water proof, thus water exposure can cause malfunctioning.

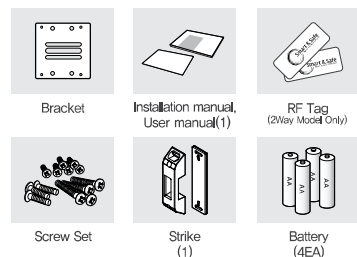
Do not install where it is exposed to snow or rain. Due to the extreme temperature difference of indoor and outdoor, it can cause dampening the door lock. Please use it after it dries.

- It can cause product malfunction or operation malfunction.

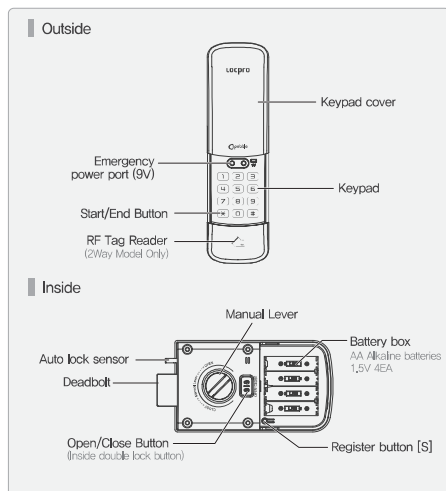
Make sure the door lock is properly installed and read manual for proper functioning.

- It can cause product malfunction or operation malfunction.

Parts



Contents in user manual can be changed without notifying users in order to improve product quality or service.



Basic Functions

How to register passcode

- Open battery cover and press register button [S].
- Put up the keypad cover and getting backlight on.
- Input the desired passcode.
Passcode can be set 4~13 digits.
- Press * button to complete the procedure.
You will hear buzzer melody from door lock.

- When register mode is cancelled, previous passcode is kept.
- When more than 14 digits are entered, it will not be registered.
- When less than 4 digits are entered, it will not be registered.
- When a new set of passcode is registered, existing passcode is deleted.
- While entering passcode, registration is cancelled when there is no action for 60 seconds.

Please make sure whether the new passcode works or not before you close the door.

Basic Functions

How to register RF Tag [2Way Model Only]

- Open battery cover and press register button [S].
- Place RF Tag on RF Tag reader.
Repeat the process consecutively if you have more RF Tags to register. You may register up to 50 RF Tags.
- Press register button [S] to complete the procedure.

- When registration mode is cancelled, existing RF Tag is kept.
- When 50 consecutive tags are registered, registration is completed automatically.
- When error occurs during the process, start over by pressing register button.
- Registration is cancelled when there is no action for 60 seconds.
- You can not register the same RF Tag twice.
- When a new RF Tag registered, existing RF Tag is deleted.

How to delete RF Tag [2Way Model Only]

- Open battery cover and press register button [S].
- Put up the keypad cover and getting backlight on.
- Press 0 button on the keypad.
- Press register button [S] to complete.

- If lost RF Tag, register new RF Tag after deleting all existing RF Tag information in system.
- When cancelled, existing RF Tag is kept.
- Delete mode is cancelled when there is no action for 60 seconds.

How to open door from inside

[Opening with manual open/Close switch]

- Move the switch to "Open" direction in order to open the door.
- Try not to use this function since it may cause overload to the motor.

