



Please read the manual thoroughly in order to secure your safety and to use the product properly.



Premium Design Smart & Premium Design Fire-proof

Electric Shock & Static Proof Passcode Hide

Introduction, Basic Functions, Additional Functions, Checklist before calling for service, Specifications

Features

- Open/Close function, Outside force-lock function, Auto close/Manual close setting function, Inside force-lock function, Others

MEMO

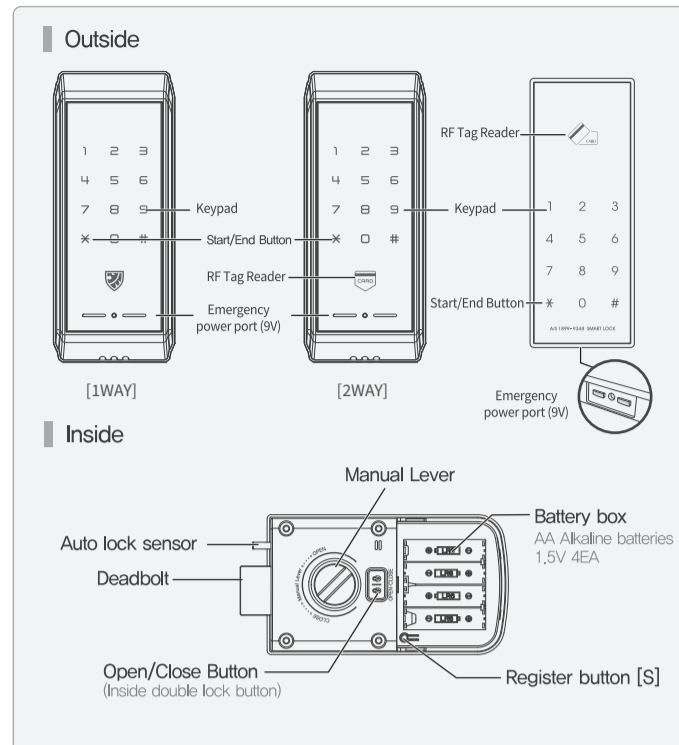
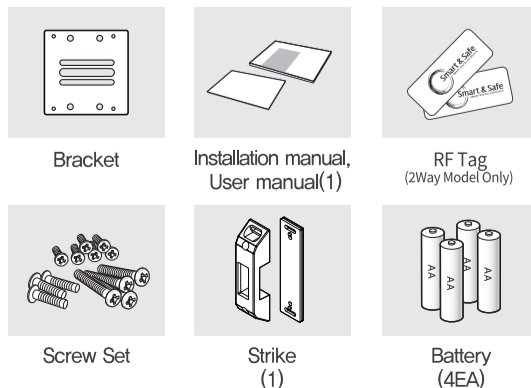
Safety Information

This section contains user safety information. Please read carefully and use it properly.

- Warning: If not followed, user can be dead or seriously injured. Caution: If not followed, user can be injured or property damage can be caused.

Do not remove, Do not spray water to the door lock or install it where it is exposed to water or damp, Do not install where it is exposed to snow or rain, Make sure the door lock is properly installed and read manual for proper functioning.

Parts



Basic Functions

How to register passcode: 1. Open battery cover and press register button [S]. 2. Input the desired passcode. 3. Press \* button to complete the procedure.

Basic Functions

How to register RF Tag [2Way Model Only], How to delete RF Tag [2Way Model Only], How to open door from inside [Opening with Manual Open/Close Lever]

## [Opening with Open/Close button]

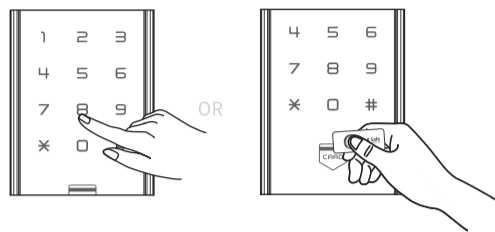


1. Press Open/Close button.
2. When door opens, you will hear a buzzer, 'bleep bleep.'

When auto lock feature is used, door open when it is shut along with a buzzer, 'bleep'.

- Auto lock is activated when the door is not opened within 3 seconds.
- While outside force lock is activated, intrusion alert goes off if someone tries to open the door from inside. (Buzzer : alert sound)

## How to open door from outside



- Press registered passcode and \*button after touching the keypad and getting backlight on.

If you want to use the passcode hide function, press imaginary number then press the passcode.

- Place RF Tag on RF Tag reader. (2Way Model Only)

- Auto lock is activated when the door is not opened within 7 seconds.
- When unregistered passcode is entered, you will hear error sound or see LED blinking.
- When incorrect passcode is entered 5 consecutive times, Prank Prevention function is activated.
- If passcode is not entered within 7 seconds after pressing more than 1 button or button, then the mode is terminated.

## Additional Functions

## Outside force-lock function by passcode

If door is opened from inside, alarm will be occurred. It could be set once and automatically deactivated when door opens.

1. When door is locked, touch keypad and then number pad backlight will get on.
2. Press #button during 3 seconds after pressing the passcode.

## Etiquette Mode function

It allows turning on or turning off the buzzer sound when using digital door lock. It is one time function which automatically is deactivated after the regular procedure.

## [Setting with passcode]

1. When door is locked, touch keypad and then number pad backlight will get on.
2. Press #button + passcode + \*button.

## [Setting with RF Tag]

1. When door is locked, touch keypad and then number pad backlight will get on.
2. Place RF Tag on RF Tag reader after pressing #button.

## Additional Functions

## Inside force-lock/release function

This function prohibits someone from opening the door using passcode from outside. This function is useful during night time when extra caution for safety is required.



## [Setting Inside force-lock function]

Press [ ] Inside force-lock button during 3 seconds.

## [Releasing Inside force-lock function]

- Open the door by rotating Manual Lever or pushing OPEN/CLOSE button.

## Passcode Hide function

Passcode hide function is to prevent someone from noticing the actual passcode. This function gets rid of anxiety that there would be fingerprint on the pad.

## [What is Passcode Hide function?]

In case of a risk of passcode exposure, this function can be useful. If you want to use this function, enter imaginary numbers before entering the actual passcode.

Ex) Imaginary number should be up to 20 digits including passcode.

## High Temperature Alert function

It checks for open mode every 3 seconds and tries to open if not in open mode. It activates open mode to open even when inside or outside force lock function is activated. It only activates open mode though pressing any button inside. Alarm is deactivated when passcode is entered.

## [What is High Temperature Alert function?]

When high temperature is detected, deadbolt switches automatically to open from close and alarm goes off.

High temperature function activates at 60°C ± 5°C or higher and alarm goes off at least 80dB.

## Intrusion Alert function

Alarm goes off when someone try to open the door abnormally. Alarm is deactivated when passcode is entered.

## [What is Intrusion Alert function?]

When parts are separated improperly or someone try to invade by breaking the door, intrusion alert alarm goes off more than 80dB.

1. 2 minutes alarm: [S] Button → 7 Button → [S] Button
2. Unending alarm: [S] Button → 8 Button → [S] Button

## Prank Prevention function

## [What is Prank Prevention function?]

When incorrect passcode used for 5 consecutive times, the system freezes for 30 seconds.

※In case of opening the door from inside, this function is deactivated.

## Deadbolt Jamming Alert function

Try Open/Close 3 times. Warning sound goes off if the problem is not resolved after the trial.

## [What is the Deadbolt Jamming Alert function?]

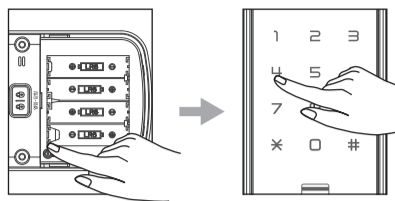
In case of entrance door malfunctioning due to deadbolt being stuck at the strike or the door not being completely closed, buzzer sound goes off and keypad LED flickers.

You will hear buzzer sound 'beep beep beep'. It is deactivated when the door is properly closed.

## Auto/Manual lock setting

Door locks automatically certain time after the door opens or closes. Manual lock setting keeps the door open at all times.

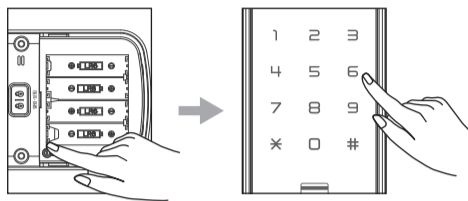
## [Auto lock setting]



1. Open battery cover and press register button [S].
2. Touch the keypad to turn the backlight on.
3. Press 4 button on the keypad.
4. Press register button [S] to complete.

※After the door opens, Auto lock works by the sensor.

## [Manual lock setting]



1. Open battery cover and press register button [S].
2. Touch the keypad to turn the backlight on.
3. Press 6 button on the keypad.
4. Press register button [S] to complete.

※After the door opens, Auto lock does not work. You can close the door by pushing # button on keypad from outside.

## Volume control function

You can adjust the volume 8 steps from mute to high.

## [Setting volume control]

1. Open battery cover and press [S] button.
2. From keypad, press #button.
3. Volume goes up whenever press #button.

※Volume of Alarm is max regardless of volume control.

※Press 3 button to set Max volume.

Press 2 button to set Low volume.

Press 1 button to set mute.

## Low battery alert function

It is activated only after it detects low battery more than 3 times. It remains activated even after power resets. It is deactivated only after replacing batteries. Low battery voltage : 4.2V ± 0.3

※ You can hear buzzer melody.

## Door open alert function

- Door open alarm goes off when door opens under auto lock mode.
- Alarm occurs 2 times every 18 second.

## [Master RF Tag Change]

[S]button → 9button → [S]button → 73button → #button  
→ Master passcode → #button → Master RF Tag → [S]button

## 4. Delete of Master Passcode, Master RF Tag

## [Master Passcode Delete]

[S]button → 9button → [S]button → 91button → #button  
→ Master passcode → #button

## [Master RF Tag Delete]

[S]button → 9button → [S]button → 93button → #button  
→ Master passcode → #button

※ All of the registered Master RF Tags will be deleted.

## Incapacitation function of usual uses passcode and RF Tag

- When door is locked, put up the keypad cover and then keypad backlight will get on.

→ 82 Button → # Button → Master passcode → \*Button

- When door is locked, put up the keypad cover and then keypad backlight will get on.

→ 82 Button → # Button → RF Tag recognition

※ Incapacitation function is deactivated.

When door is open using master passcode or RF Tag.

## Checklist before calling for service

Problem	Check	Solution
When entering passcode, buzze melody goes off.	It's time to replace batteries.	Replace all of the batteries with alkaline batteries.
After entering passcode, door doesn't open.	It's time to replace batteries.	Use 9V battery to open the door and then replace all of the batteries.
When operating Open/Close, motor stops after a while then 'bleep bleep bleep' buzzer sound comes on.	There is a deadbolt jam caused by improper hinging of the door and frame.	Use door closer to adjust the door and the frame.
It freezes while entering passcode.	In case incorrect passcode is entered 5 times, it goes to safe mode for 60 seconds.	Try again after 1 minute.
9V battery does not work when used as emergency power.	9V battery connection is bad.	Reconnect 9V battery and try again.
Door does not lock automatically after closing the door.	Sensor may be detected or magnet is displaced.	Please call A/S center and request service. Meanwhile switch to manual mode to use the lock properly.
When Open/Close the door, it feels like there is something stuck or it is shaky	Bolt for motor or striker may be loose.	Check the bolts for motor and striker and tighten it if loose. Use super glue if necessary.

## Additional Functions

## How to change batteries

When you hear a buzzer melody, replace all of the batteries.

## [Replacing batteries]

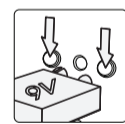
1. Use 1.5V AA authentic alkaline batteries.
2. Insert each battery according to the plus and minus sign inside the battery holder. Please be cautious since improper insertion of the battery may cause leakage or breakage.
3. After battery life is over, replace all the batteries at the same time and do not mix new batteries with old ones.

– Door lock has a special design which prevents improper insertion of the battery by not allowing any actions if the battery was installed incorrectly.

– Passcode information are kept when batteries are being replaced.

– Make sure the door lock works properly by entering passcode after replacing batteries.

## Opening door with emergency battery



When batteries are discharged, place 9V battery to emergency power port in order to use the passcode.

1. This is to provide temporary power when the door lock is not functioning due to a complete discharge of batteries.
2. Use it while the battery is still in contact with the port.
3. When using emergency power, polarity of the battery does not matter.

## Register &amp; delete function of Master passcode/Master RF Tag

It is useful function for group management

## 1. Register &amp; delete on door open position

## 2. Register of Master Passcode, Master RF Tag

## [Master Passcode Registration]

[S]button → 9button → [S]button → 71button → #button  
→ Master passcode → \*button

## [Master RF Tag Registration]

- It's available in case that master passcode is registered.

[S]button → 9button → [S]button → 73button → #button  
→ Master Passcode → #button → Master RF Tag → [S]button

## [Master RF Tag Consecutive Registration]

[S]button → 9button → [S]button → 73button → #button  
→ Master Passcode → #button → Master RF Tag → Master RF Tag  
→ ... → Master RF Tag → [S]button

Register is complete automatically when 10pcs Master RF Tags are consecutively registered. (Buzzer may be complete)

※ Be careful to manage Master Passcode and Master RF Tag. It's not possible to change or delete it if you forget the registered Master Passcode.

## 3. Change of Master Passcode, Master RF Tag

## [Master Passcode Change]

[S]button → 9button → [S]button → 71button → #button  
→ Master passcode → #button → existing Master Passcode  
→ #button → new Master Passcode → \*button

## Checklist before calling for service

Problem	Check	Solution
When entering passcode, buzze melody goes off.	It's time to replace batteries.	Replace all of the batteries with alkaline batteries.
After entering passcode, door doesn't open.	It's time to replace batteries.	Use 9V battery to open the door and then replace all of the batteries.
When operating Open/Close, motor stops after a while then 'bleep bleep bleep' buzzer sound comes on.	There is a deadbolt jam caused by improper hinging of the door and frame.	Use door closer to adjust the door and the frame.
It freezes while entering passcode.	In case incorrect passcode is entered 5 times, it goes to safe mode for 60 seconds.	Try again after 1 minute.
9V battery does not work when used as emergency power.	9V battery connection is bad.	Reconnect 9V battery and try again.
Door does not lock automatically after closing the door.	Sensor may be detected or magnet is displaced.	Please call A/S center and request service. Meanwhile switch to manual mode to use the lock properly.
When Open/Close the door, it feels like there is something stuck or it is shaky	Bolt for motor or striker may be loose.	Check the bolts for motor and striker and tighten it if loose. Use super glue if necessary.

## Specifications

Model name	K100B: Passcode
	K100B2 : Passcode, RF Tag
	C70B2 : Passcode, RF Tag
Rated voltage	6Vdc (4EA 1.5V AA Type Alkaline Batteries)
Type	Electronic (Passcode, RF Tag)
Weight	1.4kg (Include packing)
Usage Temperature	-20°C~60°C
Sensor activating Temperature	60°C ±5°C
Product size/Material (width x height x depth)	Outbody66(W) x 166(H) x 17(D) / Al diecasting
	Inbody92(W) x 159.5(H) x 38(D) / R.F ABS/ Al diecasting
Battery life	1 year if used 10 times per day
	Battery life depends on battery quality, usage frequency or usage environment
Emergency power	9V Alkaline battery(6LF22) 1EA (Optional Product)
Product type	1Way Direct current/Non Fire-proof/Temp. sensor/Non Key/Digital door lock (D - NF - T - NK - S)
	2Way Direct current/Non Fire-proof/Temp. sensor/Non Key/Digital door lock (D - NF - T - NK - S)
Equipment name	Wireless equipment for RF ID / USN
Frequency	13.56 MHz
Signal Type	A1D
Modulation Type	ASK
Certification number	MSIP - CMM - ICQ - C70B

※ This product cannot carry on perfect security function. You may want to install separate security system.

※ Contents in user manual can be changed without notifying users in order to improve product quality or service.