

■ Please read the manual thoroughly in order to secure your safety and to use the product properly.



Hotel Lock Card Security Grade

2

[User Card]

Card for Guest (Max 30ea)

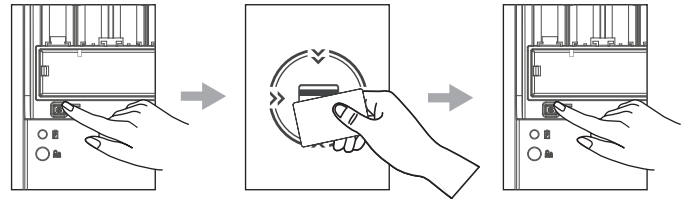
[Serve Card]

Card for Employee such as Housekeeper (Max 30ea)

[Master Card]

Card for General Manager (Max 30ea)

How to register RF Card



User Card Registration

1. Open battery cover and press register Button [S].
2. Place User Card on RF Card Reader.
※ You may register up to 30 User Cards.
3. Press register Button [S] to complete the procedure.
※ It sounds "Beep" and blinks Red LED once in a second.

Serve Card Registration

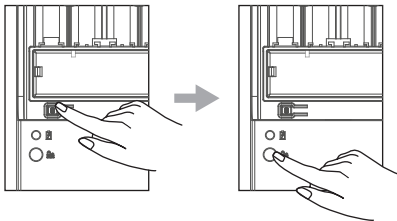
1. Open battery cover and press register Button [S] twice.
2. Place Serve Card on RF Card Reader.
※ You may register up to 30 Serve Cards.
3. Press register Button [S] to complete the procedure.
※ It sounds "Beep Beep" and blinks Red LED twice in a second.

Master Card Registration

1. Open battery cover and press register Button [S] three times.
2. Place Master Card on RF Card Reader.
※ You may register up to 30 Master Cards.
3. Press register Button [S] to complete the procedure.
※ It sounds "Beep Beep Beep" and blinks Red LED three times in a second.

How to delete RF Card

3



User Card Deletion

1. Open battery cover and press register Button [S].
2. Press "▲▲" Button for more than 2 seconds. It's deleted with "Beep" sound.

Serve Card Deletion

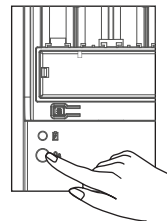
1. Open battery cover and press register Button [S] twice.
2. Press "▲▲" Button for more than 2 seconds. It's deleted with "Beep" sound.

Master Card Deletion

1. Open battery cover and press register Button [S] three times.
2. Press "▲▲" Button for more than 2 seconds. It's deleted with "Beep" sound.

Inside force - lock function

4



How to turn Inside force - lock ON

Press "▲▲" button for 3 seconds after close the door.
It beeps by blinking Red LED 10 times.

How to turn Inside force - lock OFF

Press "▲▲" button once or open the door.
It beeps by blinking Red LED 5 times.

During Inside force - lock ON

※Place Master Card

It opens the door with beep sound and Red LED blink.

※Place User Card or Serve Card

It errors with beep sound and blinks Red LED 5 times.

Auto/Manual lock setting

Auto lock setting

1. Open battery cover and press register Button [S] for 3 seconds.
2. Press "▲▲" Button twice.
3. Press register Button [S].
※After the door is opened, automatic locking function is performed through automatic locking sensor operation

Manual lock setting

1. Open battery cover and press register Button [S] for 3 seconds.
2. Press "▲▲" Button once.
3. Press register Button [S].
※After the door has been opened, the automatic locking function is not performed through automatic locking sensor operation.
※To lock the door from the outside, You can place the registered card on RF Card Reader.

- You should place the card within 60 seconds after press Button [S]. Otherwise the procedure will be cancelled.
- When you register maximum quantity of each grade, registration will be completed without pressing Button [S].
- When you register cards less than maximum quantity, registration will be completed though you do not press Button [S] within 60 seconds after the last card was placed. It keeps the previous cards info.
- In case of pressing Button [S] more than 4 times or pressing "▲▲" Button shortly, the procedure will be cancelled with Beep.
- When you place the registered card again for registration, it errors with "Beep".
- When you try to register more than maximum quantity of each grade card, it errors with "Beep".
- You can register after you delete cards.

- This product cannot carry on perfect security function. You may want to install separate security system.
- All contents rights are reserved by manufacturer, and content may not be copied or reproduced in any form or by any means.
- Contents in user manual can be changed without notifying users in order to improve product quality or service.