



Please read the manual thoroughly in order to secure your safety and to use the product properly.

- Please use the RF Tag which is provided with door lock.
If you use the RF Tag which is not provided with door lock, it may occur security problem.
The master password is unregistered when shipment from factory.



- Smart & Premium Design, Fire-proof, Electric Shock & Static Proof, Password Hide, Initializing Both For Password & RF tag, One Time Password

MEMO

This product cannot carry on perfect security function. You may want to install separate security system.

Contents in user manual can be changed without notifying users in order to improve product quality or service.

Introduction, Basic Functions, Additional Functions, Checklist before calling for service, Specifications

Features

- Open/Close function, One time password function, Outside force-lock function, Auto Close/Manual close setting function, Inside force-lock function, Others

Safety Information

This section contains user safety information. Please read carefully and use it properly.

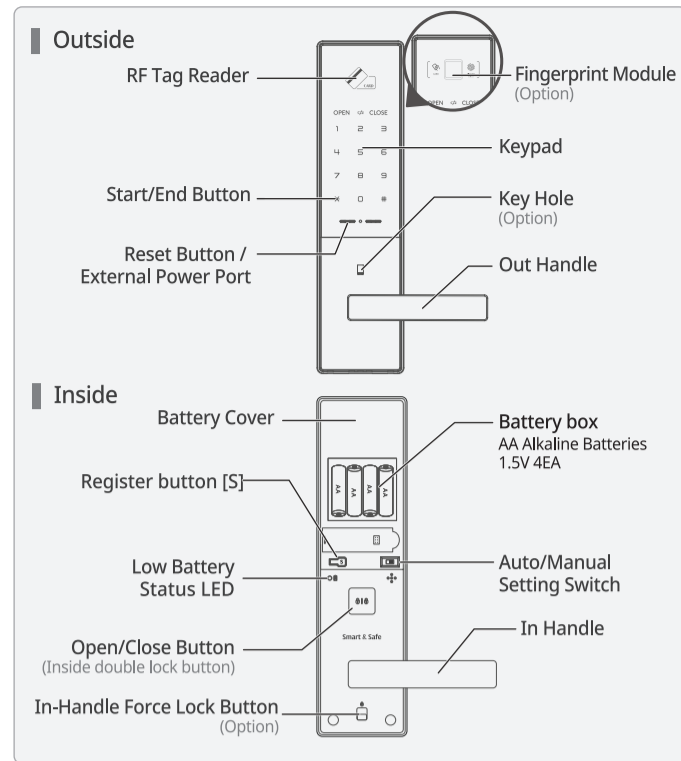
- Warning: If not followed, user can be dead or seriously injured.
Caution: If not followed, user can be injured or property damage can be caused.

Do not remove, Do not spray water to the door lock or install it where it is exposed to water or damp, Do not install where it is exposed to snow or rain, Make sure the door lock is properly installed and read manual for proper functioning.

Parts

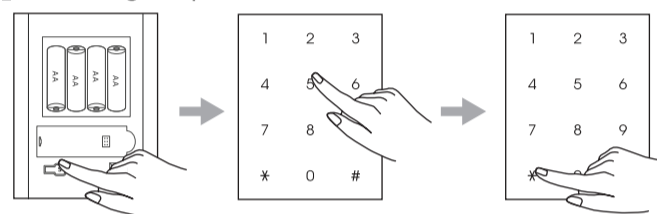


Types and quantity of RF Tag can be changed according to a specification.



Basic Functions

How to register password



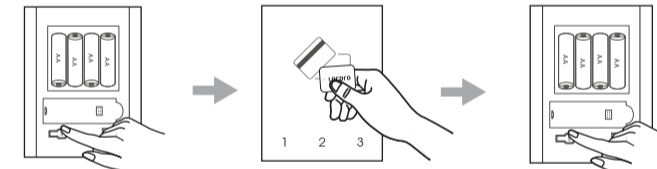
- 1. Open battery cover and shortly press register button [S].
2. After confirming the LED are turn on of keypad, input the desired password.
3. Press * button to complete the procedure.

- When register mode is canceled, previous passcode is kept.
When more than 14 digits are entered, it will not be registered.
When less than 4 digits are entered, it will not be registered.
When a new set of password is registered, existing password is deleted.
While entering password, registration is canceled when there is no action for 60 seconds.

Please make sure whether the new passcode works or not before you close the door.

Basic Functions

How to register RF Tag

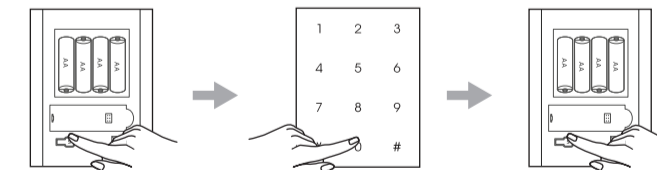


- 1. Open battery cover and press register button [S].
2. Place RF Tag on RF Tag reader.
3. Press register button [S] to complete the procedure.

- When registration mode is canceled, existing RF Tag is kept.
When 50 consecutive tags are registered, registration is completed automatically.
When error occurs during the process, start over by pressing register button.
Registration is canceled when there is no action for 60 seconds.
You can not register the same RF Tag twice.
When a new RF Tag registered, existing RF Tag is deleted.

If you register a new card even if one card, please note that all existing card information will be automatically deleted for security reasons.

How to delete RF Tag



- 1. Open battery cover and press register button [S].
2. Press 0 button on the keypad.
3. Press register button [S] to complete.

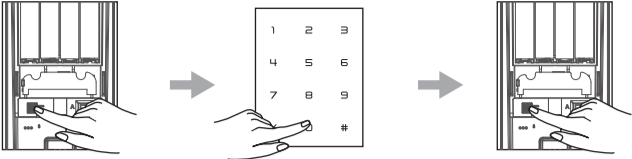
- If lost RF Tag, register new RF Tag after deleting all existing RF Tag information in system.
When canceled, existing RF Tag is kept.
Delete mode is canceled when there is no action for 60 seconds.

How to register fingerprint



- 1. Open battery cover and press register button [S].
2. Place the fingerprint on fingerprint module. (Must do it 4 times)
3. Press register button [S] to complete the procedure.
You can register and use up to 100 fingerprints.
Registration mode is cancelled when there is no action for 20 seconds.
How to register fingerprint on designated address.
[S] button -> 63 button -> [S] button -> designated address from 1 to 100 -> # button -> place fingerprints 4 times -> [S] button
Registered fingerprint count display (Registered fingerprint number blinks) [S] button -> 95 button -> [S] button

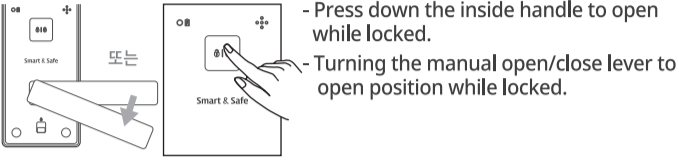
How to delete fingerprint



- [Delete all registered fingerprints]
 1. Open battery cover and press register button [S].
 2. Press 71 button.
 3. Press register button [S] to complete the deletion.

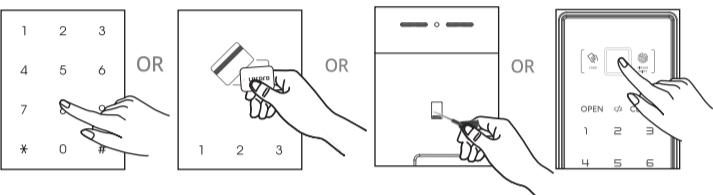
- [Delete fingerprints on designated address]
 1. Open battery cover and press register button [S].
 2. Press 73 button and press register button [S].
 3. Press the designated address '1~100' and then # button.
 4. Press register button [S] to complete the deletion.

How to open door from inside



- Auto lock is activated when the door is not opened within 7 seconds.
- When outside force-lock is set, opening the door will set off intrusion buzzer alarm.
- When Prank Prevention function is set, Prank Prevention function is deactivated.

How to open door from outside



- Press registered password and * button after touching the keypad and getting backlight on.
 ※ If you want to use the password hide function, press imaginary number then press the password.
- Place RF Tag on RF Tag reader.
 ※ Open the door when the [OPEN] LED lights up with a buzzer sound.
- Open the door using the key.
 ※ Use the key when the battery is discharged or the door lock does not work due to other circuit error.
 ※ Be sure to keep or carry at least one key outside.

- Auto lock is activated when the door is not opened within 7 seconds.
- When unregistered passcode is entered, you will hear error sound or see LED blinking.
- When incorrect passcode is entered 5 consecutive times, Prank Prevention function is activated.
- If passcode is not entered within 7 seconds after pressing more than 1 button or * button, then the mode is terminated.

Intrusion alert function

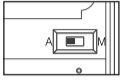
When parts are separated improperly or someone try to invade by breaking the door, intrusion alert alarm goes off more than 80dB.
 ※ Alarm goes off when someone try to open the door abnormally.
 ※ Alarm is deactivated when passcode is entered or RF Tag is placed.

- 2 minutes alarm: [S] Button → 7 Button → [S] Button
- Unending alarm: [S] Button → 8 Button → [S] Button

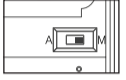
Prank prevention function

When incorrect password or TF Tag is used for 5 consecutive times, the system freezes for 30 seconds.
 ※ This function is maintained even when power is removed.
 ※ Beep alarm sounds for 5 seconds and stop the operation for 25 seconds.
 ※ Opening the door from inside, this function is deactivated.

Auto/Manual lock setting



[Auto lock setting]
 Open battery cover and set Auto/Manual switch to 'Auto [A]'.
 ※ It determines to auto lock while switching over to close mode after open mode.



[Manual lock setting]
 Open battery cover and set Auto/Manual switch to 'Manual [M]'.
 ※ It determines to manual lock while switching over to close mode after open mode.
 ※ To lock from outside, press more than 1 button on the keypad or press * button.

Deadbolt jamming alert function

In case of entrance door malfunctioning due to deadbolt being stuck at the strike or the door not being completely closed for more 3 times, buzzer sound goes off and keypad LED flickers.

Door open alert function

Door open alarm goes off when door opens under auto lock mode.
 ※ Alarm occurs 2 times every 18 second.

One time password setting

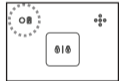
In addition to the user password, this function allows you to set a password that can be opened only.
 Ex) Password for one-time visitors, such as friends, household assistants.

- Register button[S] → User password → # → 1Button → #
 → One Time Password → # → One Time Password → *

※ One Time Password is automatically deleted after use.
 If you don't use the registered One Time Password, you need to changed the existing user Password to delete the One Time Password as well.

Low battery alert function

It is activated only after it detects low battery more than 3 times. It remains activated even after power resets. It is deactivated only after replacing batteries. Low battery voltage : 4.2V±0.3



In case of low battery, low battery buzzer sound goes off and LED starts to flicker.
 ※ You can hear buzzer melody.

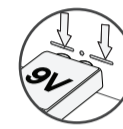
Volume control function

You can adjust the volume 8 steps from mute to high.
 [Setting volume control]
 1. Open battery cover and press [S] button.
 2. From keypad, press # button.
 3. Volume goes up whenever press # button.
 ※ Press 3 button to set Max volume / Press 2 button to set Low volume.
 Press 1 button to set mute.
 ※ Volume of Alarm is max regardless of volume control.
 4. Press [S] Button.

How to replace batteries and how to deal with discharge

[Replacing batteries]
 1. Use 1.5V AA authentic alkaline batteries.
 2. Insert each battery according to the plus and minus sign inside the battery holder. Please be cautious since improper insertion of the battery may cause leakage or breakage.
 3. After battery life is over, replace all the batteries at the same time and do not mix new batteries with old ones.
 ※ Door lock has a special design which prevents improper insertion of the battery by not allowing any actions if the battery was installed incorrectly.
 ※ Password and RF Tag information are kept when batteries are being replaced.
 ※ Make sure the door lock works properly by entering passcode after replacing batteries.

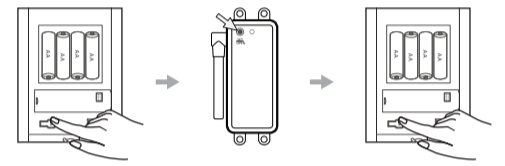
Opening door with emergency battery



When batteries are discharged, place 9V battery to emergency power port in order to use the passcode.

- This is to provide temporary power when the door lock is not functioning due to a complete discharge of batteries.
- Use it while the battery is still in contact with the port.
- When using emergency power, polarity of the battery does not matter.

Wireless communication module registration (Optional Product)



[Registering wireless communication module]
 1. Open battery cover and press [S] button.
 2. Press register/open button on the wireless communication module.
 3. Press [S] button.
 4. Press open button on the wireless module to see if door lock operates properly.
 ※ Please register within 60 seconds.
 ※ Can register 5pcs of wireless module continuously.

[Deleting wireless communication module]
 1. Open battery cover and press [S] button.
 2. Press the number 5 button.
 3. Press [S] button.

Outside force-lock function by password

If door is opened from inside, alarm will be occurred.
 1. When door is locked, touch keypad and then backlight will get on.
 2. Press #Button during 3 seconds after pressing the Password.
 ※ If you open the door from outside, this function is automatically canceled.

Etiquette mode function

It allows turning on or turning off the buzzer sound when using digital door lock. It is one time function which automatically is deactivated after the regular procedure.

- [Setting with password]
 1. When door is locked, touch keypad and then backlight will get on.
 2. Press # Button + Password + * Button.

[Setting with RF Tag]

- When door is locked, touch keypad and then backlight will get on.
- Place RF Tag on RF Tag reader after pressing # button.

Inside force-lock function

This function prohibits someone opening the door using Password or RF Tag or Fingerprint from outside. ※ The mechanical key can open the door.(Option)



[Setting inside force-lock function]
 Press 000 button during 3 seconds.
 [Cancel inside force-lock function]
 Pull down door handle from inside or press 000 button.

Password hide function

In case of a risk of Password exposure, this function can be useful. If you want to use this function, enter imaginary numbers(up to 16digits) before entering the actual password.
 Ex) Imaginary number should be up to 20 digits including password.

Initializing function

This function deletes registered user password, master password, card, fingerprint and one time password information at once.
 Ex) Can be used if the user changes.

- Open battery cover and press [S] button.
- Press registered user password and press # button
- Press Open/Close button during 5 seconds.

※ When this function is executed, all registered information is deleted and the user password is reset to '1234'.

Reset function

In case there is malfunction in door lock, pressing RESET button will set the program to factory settings.
 ※ The registered Password and RF Tag are kept after setting the program to factory settings.

High temperature alert function

High temperature function activates at 60±10, the door will be opened automatically.
 It checks for open mode every 3 seconds and tries to open if not in open mode. It activates open mode to open even when inside or outside force lock function is activated. It only activates open mode though pressing any button inside. Alarm is deactivated when password is entered or RF Tag is placed.
 ※ If the inside unit is exposed to direct sunlight for a long time, the temperature sensor may be activated and an alarm may sound.

Master password / RF Tag setting & delete

※ How to check the master password registration : Register a new Master Password and delete it again. If the 'Beep' alarm sounds during registration, the Master Password is registered.
 ※ Please proceed to registration/delete/change the Master Password/Card with the door open.

[Master password registration]

- [S]button → 9button → [S]button → 71button → #button
 → Master password → * button

[Master password change]

- [S]button → 9button → [S]button → 71button → # button
 → Existing master password → # button → New master password → * button

[Master password delete]

- [S]button → 9button → [S]button → 91button → # button
 → Master Password → #button

[Master RF Tag registration]

It's available in case that Master Password is registered.
 [S]button → 9button → [S]button → 73button → # button
 → Master Password → # button → Master RF Tag → [S]button

[Master RF Tag consecutive registration]

- [S]button → 9button → [S]button → 73button → # button
 → Master password → # button → Master RF Tag → Master RF Tag
 → ... → Master RF Tag → [S]button

※ Register is complete automatically when 10pcs Master RF Tags are consecutively registered. (Buzzer means 'be complete')

[Master RF tag change]

- [S]button → 9 button → [S]button → 73 button → # button
 → Master Password → #button → Master RF tag → [S]button
 ※ If you register a new master card even if one card, please note that all previously registered master card information will be automatically deleted for security reasons.

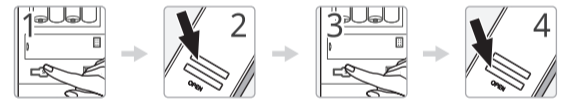
[Master RF Tag delete]

- [S]button → 9button → [S] button → 93button → # button
 → Master password → # button
 ※ All of the registered Master RF Tags will be deleted.

Initializing function both for user password & RF Tag

[What is initializing function?]
 This function allows a person with master authority to temporarily restrict the use of password and card set by user.
 82 Button → # Button → Master password → * Button
 82 Button → # Button → Master card → * Button
 ※ Opening the door with a Master Password or Master Card, this feature will be disabled.
 ※ This function must be set/delete with Master Password or Master Card.

Remote controller registration (Optional Product)



[To register the remote controller]
 1. Lift up the battery cover from the main body, then press the register button [S].
 2. Press and hold the register button on the remote controller for 4 seconds.
 3. Press the register button [S] on the main body.
 4. Press the open button on the remote controller to see if the door lock operates properly.



[To delete remote controller]
 1. Lift up the battery cover from the main body, then press the register button [S].
 2. Press 5 on the keypad.
 3. Press the register button [S]

Checklist before calling for service

Problem	Check	Solution
When entering passcode, buzzer melody goes off.	It's time to replace batteries.	Replace all of the batteries with alkaline batteries.
After entering password, door doesn't open.	It's time to replace batteries.	Use 9V battery to open the door and then replace all of the batteries.
When operating Open/Close, motor stops after a while then 'bleep bleep' buzzer sound comes on.	There is a deadbolt jam caused by improper hinging of the door and frame.	Use door closer to adjust the door and the frame.
It freezes while entering passcode.	In case incorrect passcode is entered 5 times, it goes to safe mode for 60 seconds.	Try again after 1 minute.
9V battery does not work when used as emergency power.	9V battery connection is bad.	Reconnect 9V battery and try again.
Door does not lock automatically after closing the door.	Sensor may be defected or magnet is displaced.	Please call A/S center and request service. Meanwhile switch to manual mode to use the lock properly.
When Open/Close the door, it feels like there is something stuck or it is shaky.	Bolt for motis or striker may be loose.	Check the bolts for motis and tighten it if loose. Use super glue if necessary.

Specifications

Rated voltage	DC 6 V (4EA 1.5V AA Type Alkaline Batteries)
Weight	3kg (Include packing)
Usage Temperature	-20°C~60°C
Sensor activating Temperature	60°C ± 10°C
Product size/Material (width×height×depth)	Outbody 80(W) x 308(H) x 18(D) / Al diecasting Inbody 75(W) x 294(H) x 34(D) / R.F.ABS / Al diecasting
Battery life	1 year if used 10 times per day Battery life depends on battery quality, usage frequency or usage environment
Emergency power	9V Alkaline battery(6LF22) 1EA (Optional Product)